

Mensch und Maschine Software SE

Company Presentation

Status March 19, 2024 / Annual report 2023

NC: Part Henshe Open House.nc (Time 00:14:15)

75: 58 Tangent Machining Offset 0.1

74181 L X23.9813 Y67.0006 Z7.4755 A-48.6918 C20.2164 F

74182 L X25.4301 Y65.1211 Z9.1468 A-47.7587 C21.0643 F

74183 L X26.9088 Y63.203 Z10.7361 A-46.8257 C21.9122 F

74184 L X28.4155 Y61.2485 Z12.2432 A-45.8927 C22.7601

74185 L X29.9483 Y59.2601 Z13.6679 A-44.9597 C23.6081

74186 L X31.5056 Y57.24 Z15.0099 A-44.0266 C24.456 F

74187 L X33.0855 Y55.1905 Z16.2689 A-43.0936 C25.3039

74188 L X34.6861 Y53.1142 Z17.4447 A-42.1606 C26.15

74189 L X36.3058 Y51.0131 Z18.537 A-41.2276 C26.9999

74190 L X37.9426 Y48.8899 Z19.5456 A-40.2945 C27.8477

74191 L X39.5947 Y46.7467 Z20.4702 A-39.3615 C28.6956

74192 L X41.2605 Y44.5859 Z21.3105 A-38.4285 C29.5435

74193 L X42.9379 Y42.4098 Z22.0664 A-37.4955 C30.3914

74194 L X44.6253 Y40.2209 Z22.7375 A-36.5624 C31.2393

74195 L X46.3209 Y38.0214 Z23.3235 A-35.6294 C32.0873

74196 L X48.0228 Y35.8137 Z23.8243 A-34.6964 C32.9352

74197 L X49.7291 Y33.6002 Z24.2396 A-33.7634 C33.7831

74198 L X51.4382 Y31.3831 Z24.569 A-32.8303 C34.631 F

74199 L X53.1483 Y29.1649 Z24.8104 A-31.8973 C35.4789

74200 L X54.8574 Y26.9478 Z24.9696 A-30.9643 C36.3269

74201 L X56.5637 Y24.7342 Z25.0401 A-30.0313 C37.1748

74202 L X58.2636 Z25.0238 A-29.0982 C38.0227

74203 L X59.9612 Y20.3271 Z24.8205 A-28.1652 C38.8706

74204 L X61.6486 Y18.1381 Z24.7298 A-27.2322 C39.7185

74205 L X63.328 Y15.9621 Z24.4515 A-26.2992 C40.5665

74206 L X64.9918 Y13.8013 Z24.0854 A-25.3661 C41.4141

74207 L X66.6439 Y11.6581 Z23.6312 A-24.4331 C42.2623

74208 L X68.2807 Y9.5348 Z23.0886 A-23.5001 C43.1102 F

74209 L X69.9004 Y7.4338 Z22.4573 A-22.5671 C43.9582 F

74210 L X71.503 Y5.3574 Y53.7375 A-21.6344 C44.8061 F

74211 L X73.0904 Y3.3064 Z21.7375 A-20.7014 C45.6541 F

74212 L X74.6625 Y1.2809 Z21.1625 A-19.7684 C46.5021 F

74213 L X76.2201 Y-0.7209 Z20.5125 A-18.8354 C47.3501 F

74214 L X77.7632 Y-2.7464 Z19.7875 A-17.9024 C48.1981 F

74215 L X79.2919 Y-4.7879 Z19.0875 A-16.9694 C49.0461 F

74216 L X80.8062 Y-6.8454 Z18.3125 A-16.0364 C49.8941 F

74217 L X82.3062 Y-8.9199 Z17.4625 A-15.1034 C50.7421 F

74218 L X83.7919 Y-11.0114 Z16.5375 A-14.1704 C51.5901 F

74219 L X85.2632 Y-13.1219 Z15.5375 A-13.2374 C52.4381 F

74220 L X86.7201 Y-15.2504 Z14.4625 A-12.3044 C53.2861 F

74221 L X88.1626 Y-17.3969 Z13.3125 A-11.3714 C54.1341 F

74222 L X89.5907 Y-19.5604 Z12.0875 A-10.4384 C54.9821 F

74223 L X91.0044 Y-21.7419 Z10.7875 A-9.5054 C55.8301 F

74224 L X92.4037 Y-23.9404 Z9.4125 A-8.5724 C56.6781 F

74225 L X93.7886 Y-26.1569 Z7.9625 A-7.6394 C57.5261 F

74226 L X95.1591 Y-28.3914 Z6.4375 A-6.7064 C58.3741 F

74227 L X96.5152 Y-30.6439 Z4.8375 A-5.7734 C59.2221 F

74228 L X97.8569 Y-32.9154 Z3.1625 A-4.8404 C60.0701 F

74229 L X99.1832 Y-35.2069 Z1.5125 A-3.9074 C60.9181 F

74230 L X100.4951 Y-37.5184 Z-0.1875 A-2.9744 C61.7661 F

74231 L X101.7926 Y-39.8509 Z-1.8125 A-2.0414 C62.6141 F

74232 L X103.0757 Y-42.2044 Z-3.4125 A-1.1084 C63.4621 F

74233 L X104.3444 Y-44.5789 Z-5.0875 A-0.1754 C64.3101 F

74234 L X105.5987 Y-46.9744 Z-6.8375 A-0.2424 C65.1581 F

74235 L X106.8386 Y-49.3909 Z-8.5625 A-0.3094 C66.0061 F

74236 L X108.0641 Y-51.8284 Z-10.2625 A-0.3764 C66.8541 F

74237 L X109.2752 Y-54.2869 Z-11.9375 A-0.4434 C67.7021 F

74238 L X110.4719 Y-56.7664 Z-13.5875 A-0.5104 C68.5501 F

74239 L X111.6542 Y-59.2679 Z-15.2125 A-0.5774 C69.3981 F

74240 L X112.8221 Y-61.7904 Z-16.8125 A-0.6444 C70.2461 F

74241 L X113.9756 Y-64.3349 Z-18.3875 A-0.7114 C71.0941 F

74242 L X115.1147 Y-66.8904 Z-19.9375 A-0.7784 C71.9421 F

74243 L X116.2394 Y-69.4579 Z-21.4625 A-0.8454 C72.7901 F

74244 L X117.3497 Y-72.0374 Z-22.9625 A-0.9124 C73.6381 F

74245 L X118.4456 Y-74.6299 Z-24.4375 A-0.9794 C74.4861 F

74246 L X119.5271 Y-77.2444 Z-25.8875 A-1.0464 C75.3341 F

74247 L X120.5942 Y-79.8809 Z-27.3125 A-1.1134 C76.1821 F

74248 L X121.6469 Y-82.5394 Z-28.7125 A-1.1804 C77.0301 F

74249 L X122.6851 Y-85.2199 Z-30.0875 A-1.2474 C77.8781 F

74250 L X123.7088 Y-87.9224 Z-31.4375 A-1.3144 C78.7261 F

74251 L X124.7181 Y-90.6469 Z-32.7625 A-1.3814 C79.5741 F

74252 L X125.7131 Y-93.3934 Z-34.0625 A-1.4484 C80.4221 F

74253 L X126.6938 Y-96.1629 Z-35.3375 A-1.5154 C81.2701 F

74254 L X127.6601 Y-98.9554 Z-36.5875 A-1.5824 C82.1181 F

74255 L X128.6131 Y-101.7709 Z-37.8125 A-1.6494 C82.9661 F

74256 L X129.5528 Y-104.6084 Z-39.0125 A-1.7164 C83.8141 F

74257 L X130.4791 Y-107.4689 Z-40.1875 A-1.7834 C84.6621 F

74258 L X131.3921 Y-110.3514 Z-41.3375 A-1.8504 C85.5101 F

74259 L X132.2918 Y-113.2559 Z-42.4625 A-1.9174 C86.3581 F

74260 L X133.1781 Y-116.1824 Z-43.5625 A-1.9844 C87.2061 F

74261 L X134.0511 Y-119.1309 Z-44.6375 A-2.0514 C88.0541 F

74262 L X134.9108 Y-122.0914 Z-45.6875 A-2.1184 C88.9021 F

74263 L X135.7571 Y-125.0649 Z-46.7125 A-2.1854 C89.7501 F

74264 L X136.5901 Y-128.0504 Z-47.7125 A-2.2524 C90.5981 F

74265 L X137.4108 Y-131.0579 Z-48.6875 A-2.3194 C91.4461 F

74266 L X138.2181 Y-134.0864 Z-49.6375 A-2.3864 C92.2941 F

74267 L X139.0121 Y-137.1369 Z-50.5625 A-2.4534 C93.1421 F

74268 L X139.7928 Y-140.2084 Z-51.4625 A-2.5204 C93.9901 F

74269 L X140.5601 Y-143.3019 Z-52.3375 A-2.5874 C94.8381 F

74270 L X141.3141 Y-146.4174 Z-53.1875 A-2.6544 C95.6861 F

74271 L X142.0548 Y-149.5549 Z-54.0125 A-2.7214 C96.5341 F

74272 L X142.7821 Y-152.7144 Z-54.8125 A-2.7884 C97.3821 F

74273 L X143.4961 Y-155.8959 Z-55.5875 A-2.8554 C98.2301 F

74274 L X144.1968 Y-159.0994 Z-56.3375 A-2.9224 C99.0781 F

74275 L X144.8841 Y-162.3249 Z-57.0625 A-2.9894 C99.9261 F

74276 L X145.5581 Y-165.5724 Z-57.7625 A-3.0564 C100.7741 F

74277 L X146.2188 Y-168.8419 Z-58.4375 A-3.1234 C101.6221 F

74278 L X146.8661 Y-172.1334 Z-59.0875 A-3.1904 C102.4701 F

74279 L X147.5001 Y-175.4469 Z-59.7125 A-3.2574 C103.3181 F

74280 L X148.1208 Y-178.7824 Z-60.3125 A-3.3244 C104.1661 F

74281 L X148.7281 Y-182.1399 Z-60.8875 A-3.3914 C105.0141 F

74282 L X149.3221 Y-185.5194 Z-61.4375 A-3.4584 C105.8621 F

74283 L X149.9028 Y-188.9209 Z-61.9625 A-3.5254 C106.7101 F

74284 L X150.4701 Y-192.3444 Z-62.4625 A-3.5924 C107.5581 F

74285 L X151.0241 Y-195.7899 Z-62.9375 A-3.6594 C108.4061 F

74286 L X151.5648 Y-199.2574 Z-63.3875 A-3.7264 C109.2541 F

74287 L X152.0921 Y-202.7469 Z-63.8125 A-3.7934 C110.1021 F

74288 L X152.6061 Y-206.2584 Z-64.2125 A-3.8604 C110.9501 F

74289 L X153.1068 Y-209.7919 Z-64.5875 A-3.9274 C111.7981 F

74290 L X153.5941 Y-213.3474 Z-64.9375 A-3.9944 C112.6461 F

74291 L X154.0681 Y-216.9249 Z-65.2625 A-4.0614 C113.4941 F

74292 L X154.5288 Y-220.5244 Z-65.5625 A-4.1284 C114.3421 F

74293 L X154.9761 Y-224.1469 Z-65.8375 A-4.1954 C115.1901 F

74294 L X155.4101 Y-227.7924 Z-66.0875 A-4.2624 C116.0381 F

74295 L X155.8308 Y-231.4609 Z-66.3125 A-4.3294 C116.8861 F

74296 L X156.2381 Y-235.1524 Z-66.5125 A-4.3964 C117.7341 F

74297 L X156.6321 Y-238.8769 Z-66.6875 A-4.4634 C118.5821 F

74298 L X157.0128 Y-242.6344 Z-66.8375 A-4.5304 C119.4301 F

74299 L X157.3801 Y-246.4249 Z-66.9625 A-4.5974 C120.2781 F

74300 L X157.7341 Y-250.2474 Z-67.0625 A-4.6644 C121.1261 F

74301 L X158.0748 Y-254.0919 Z-67.1375 A-4.7314 C121.9741 F

74302 L X158.4021 Y-257.9584 Z-67.1875 A-4.7984 C122.8221 F

74303 L X158.7161 Y-261.8469 Z-67.2125 A-4.8654 C123.6701 F

74304 L X159.0168 Y-265.7574 Z-67.2125 A-4.9324 C124.5181 F

74305 L X159.3041 Y-269.6909 Z-67.1875 A-4.9994 C125.3661 F

74306 L X159.5781 Y-273.6474 Z-67.1375 A-5.0664 C126.2141 F

74307 L X159.8388 Y-277.6269 Z-67.0625 A-5.1334 C127.0621 F

74308 L X160.0861 Y-281.6294 Z-66.9625 A-5.2004 C127.9101 F

74309 L X160.3201 Y-285.6549 Z-66.8375 A-5.2674 C128.7581 F

74310 L X160.5408 Y-289.7024 Z-66.6875 A-5.3344 C129.6061 F

74311 L X160.7481 Y-293.7719 Z-66.5125 A-5.4014 C130.4541 F

74312 L X160.9421 Y-297.8634 Z-66.3125 A-5.4684 C131.3021 F

74313 L X161.1228 Y-301.9769 Z-66.0875 A-5.5354 C132.1501 F

74314 L X161.2901 Y-306.1124 Z-65.8375 A-5.6024 C133.0001 F

74315 L X161.4441 Y-310.2709 Z-65.5625 A-5.6694 C133.8501 F

74316 L X161.5848 Y-314.4524 Z-65.2625 A-5.7364 C134.7001 F

74317 L X161.7121 Y-318.6569 Z-64.9375 A-5.8034 C135.5501 F

74318 L X161.8261 Y-322.8844 Z-64.5875 A-5.8704 C136.4001 F

74319 L X161.9271 Y-327.1349 Z-64.2125 A-5.9374 C137.2501 F

74320 L X162.0151 Y-331.4074 Z-63.8125 A-6.0044 C138.1001 F

74321 L X162.0901 Y-335.7019 Z-63.3875 A-6.0714 C138.9501 F

74322 L X162.1521 Y-340.0184 Z-62.9375 A-6.1384 C139.8001 F

74323 L X162.2011 Y-344.3569 Z-62.4625 A-6.2054 C140.6501 F

74324 L X162.2371 Y-348.7174 Z-61.9625 A-6.2724 C141.5001 F

74325 L X162.2601 Y-353.0999 Z-61.4375 A-6.3394 C142.3501 F

74326 L X162.2701 Y-357.5044 Z-60.8875 A-6.4064 C143

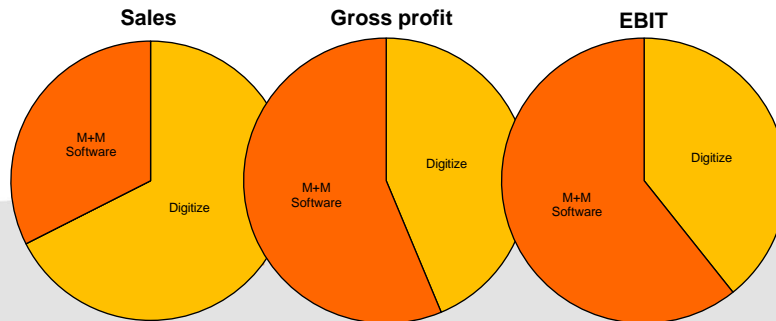
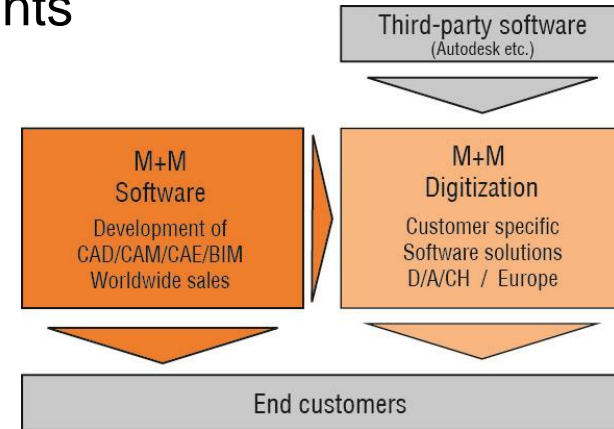
Business model

■ Leading developer of Technical Software Solutions

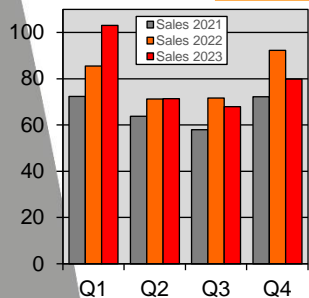
- ◆ CAD/CAM/CAE = Computer Aided Design / Manufacturing / Engineering
PDM/PLM = Product Data/Lifecycle Management / BIM = Building Information Modelling/Management
- ◆ Founded 1984 – 40 years on the market // IPO 1997 – 27 years public // >1,100 employees

■ Added Value well balanced over 2 Segments

- ◆ **M+M Software: Proprietary Standard Software**
CAD/CAM / BIM/Civil Engineering / Garden/Landscaping / CAE
- ◆ **Digitization: Customized Software Solutions**
Proprietary Added Value: Customer Projects / Training / Hotline etc.
Third-party software (Autodesk etc.): Leveraging M+M market share (previous segment name: VAR Business)

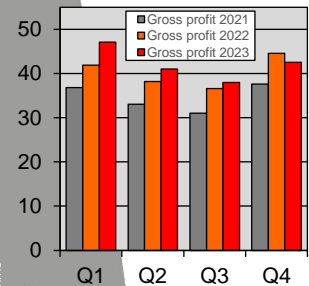


Sustainable business development



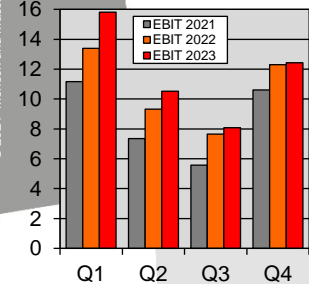
- Record sales 2023: EUR 322.31 mln / +0.5%
 - Q1 Autodesk 3YR final peak // Q2-Q4 M+M proprietary business dominating
 - 9YR average sales growth 2014-2023: +10% p.a.
 - Sales 2023 pro forma without Autodesk Resale: approx. EUR 216 mln (PY: 209)

- Record gross profit 2023: EUR 168.53 mln / +4.6%
 - 2YR growth 2022/23: +10.4% p.a.
 - Gross yield jump from proprietary business: Q1 45.7% // Q2-Q4 55.4%
 - 9YR growth 2014-2023: +9.5% p.a. / more steadily than sales development

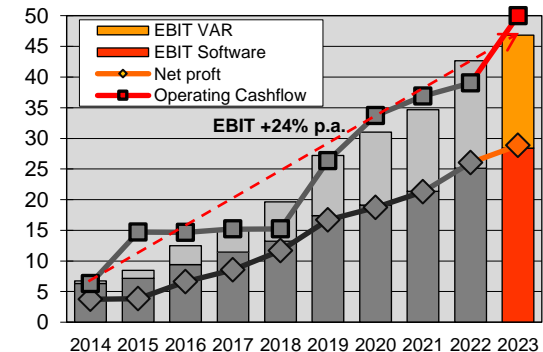
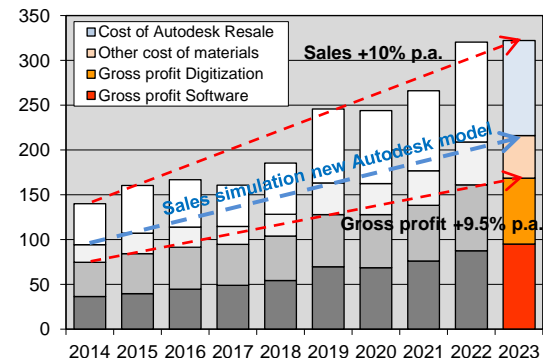


- Record EBIT 2023: EUR 46.83 mln / +10%
 - Strict cost discipline enabled continuous EBIT growth in spite of inflation
 - EBIT margin 14.5% (PY: 13.3%) // without Autodesk Resale: ~22% (PY: 20%)
 - EBIT growth 2014-2023: +24% p.a. / highly disproportionate to sales & gross profit

- Record net profit 2023: EUR 28.87 mln / +11% // EPS 172 Cents
 - 2YR growth 2022/23: +17% p.a. - exactly matching 2021 +14-20% guidance
 - 9YR average net profit growth 2014-2023: +24.5% p.a.



- Record cash flows 2023: EUR 50.59 mln / +30% // CPS 302 Cents
 - Cashflow growth 2014-2023: +25% p.a.
- Record Dividend Proposal 2023: 165 Cents (PY: 140 / +18%)
 - Dividend growth 2014-2023: +26.4% p.a.



Sustainable business development: Outlook

Gross profit +9.5% p.a. / EBIT +24% p.a. – what's the trick?

- Very simple method: Opex increase 2014-2023 just +6.7% p.a.
- Opex development in the M+M Group is controlled continuously & locally (~100 profit centers) at ~2/3 relative to gross profit development
 - Continuous profit gains through strict cost control management
- ✓ Working well even despite short-term dips in gross profit development (2016/17: Gross profit +3.7% / EBIT +22% // 2YR 19/21: Gross profit +8.2% / EBIT +28%)

Sustainably profitable strategy - also for the future:

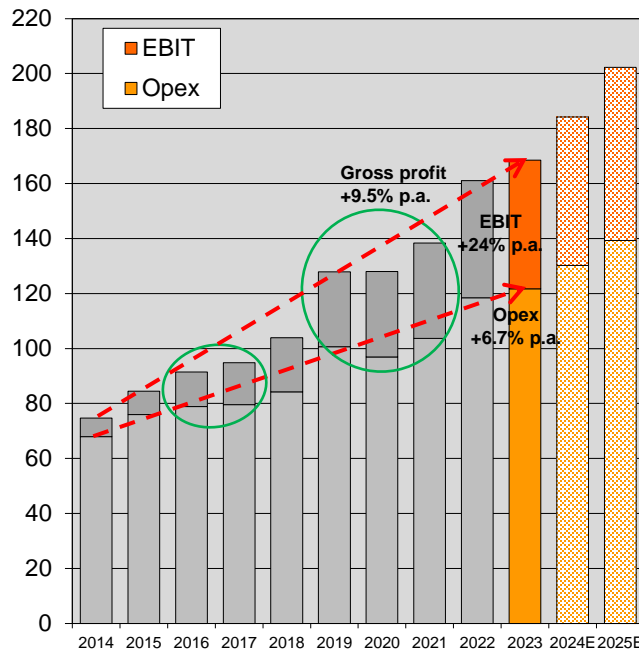
- Organic growth + cost discipline = economy of scale effect

Long-term growth target (organic):

- Profit doubling in 4-5 years: EPS >344 Cents by 2027/28

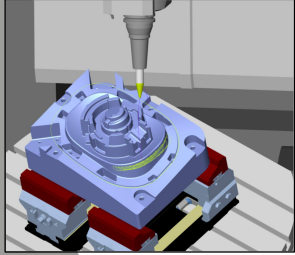
2024E/25E: EBIT/EPS target path still +17% p.a. on average

- ◆ 2024E: Gross profit +8-12% to EUR 182-189 mln
EPS +10-20% to 189-206 Cents / Dividend +20-30 to 185-195 Cents
 - Very strong Q1/2023 - profit growth unlikely to start before Q2
- ◆ 2025E: EBIT/EPS +12-25% / Dividend +25-35 Cents



The M+M Portfolio: Various Digital Twins

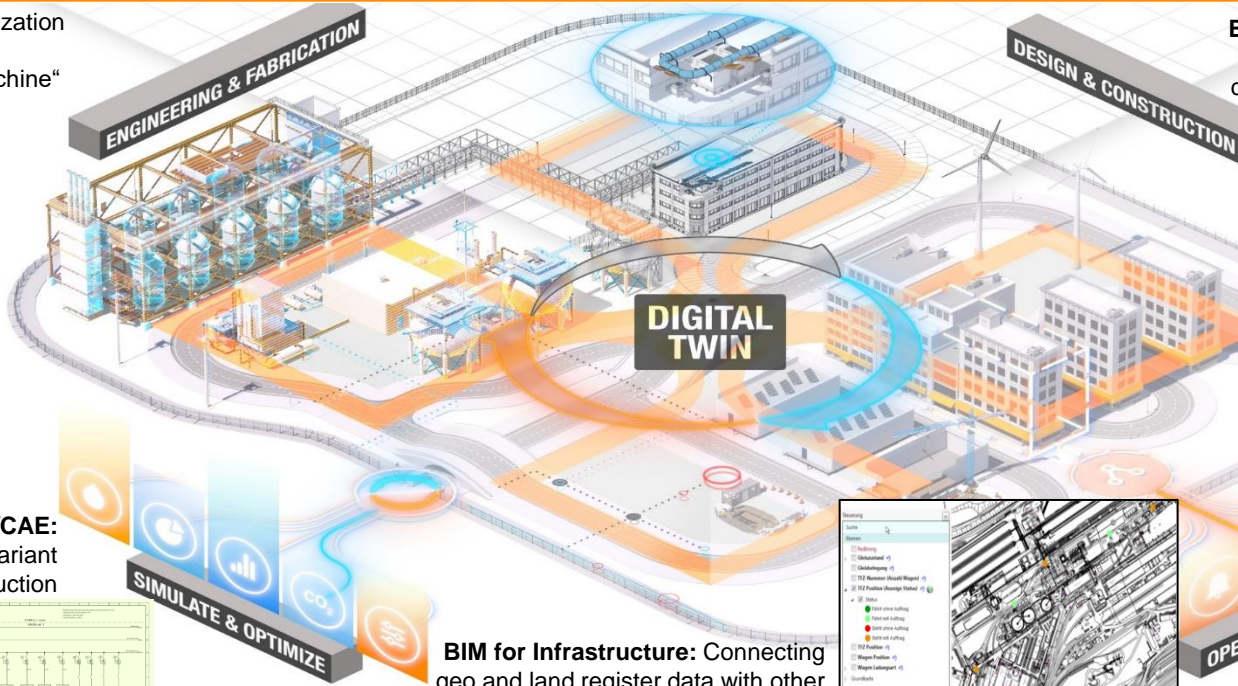
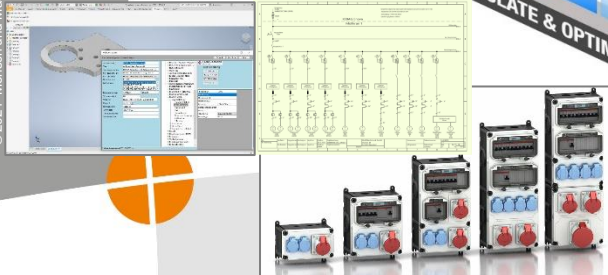
CAM: Simulation/Optimization of the entire machining process in a „Virtual Machine“



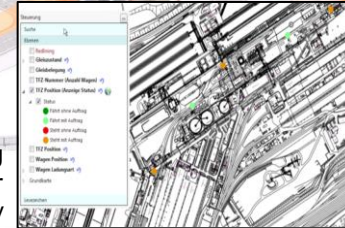
BIM: All disciplines of a building in 3D, including masses, cost dimensions and project timeline



Manufacturing/CAE: PDM, plant or variant design/construction



BIM for Infrastructure: Connecting geo and land register data with other data sources to Digital City or Factory



man  machine
Software

mens  machine
Software



CAD/CAM in practice (M+M Software)

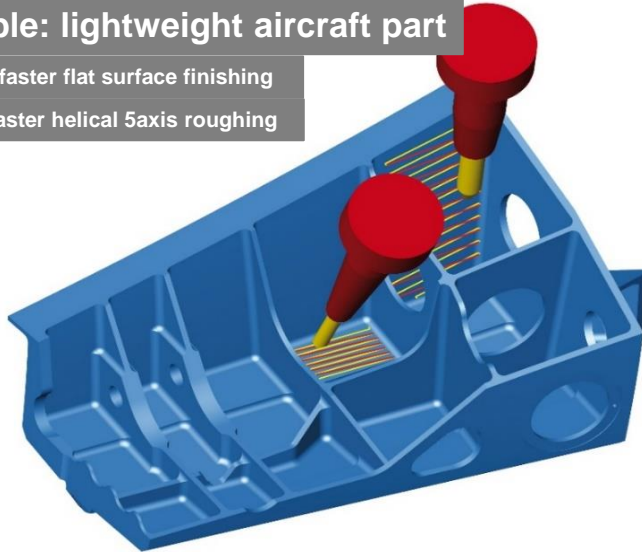


- CAM – Computer Aided Manufacturing
 - 100% Subsidiary Open Mind – Product line *hyperMILL*®
 - High end: Average revenue approx. EUR 30,000 per seat
 - Globally >10,000 customers with >20,000 CAM seats

Example: lightweight aircraft part

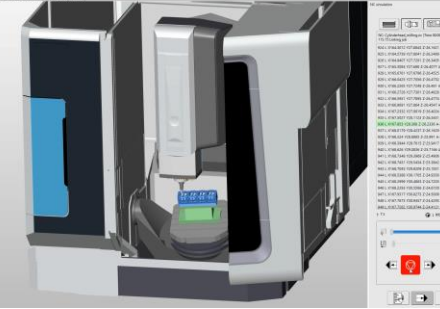
Up to 10x faster flat surface finishing

Up to 5x faster helical 5axis roughing



Precision machine tools' purchase prices are in the six or seven digit Euro range. *hyperMILL*® reduces milling times by up to 90% through intelligent machining strategies, pushing return on investment for these expensive machine tools to completely new dimensions.

Virtual Machine Simulation



hyperMILL®



CAD Software
(3D design)



CAM Software
generating NC
code for machine



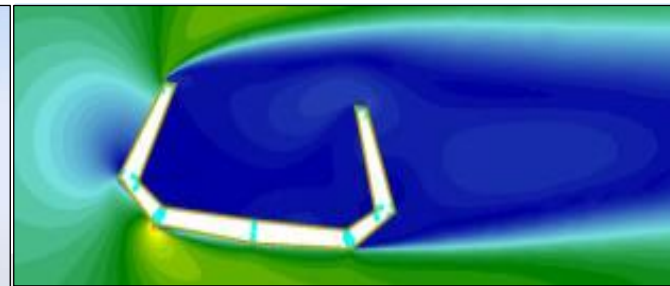
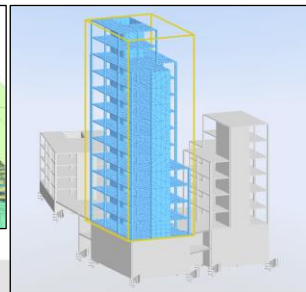
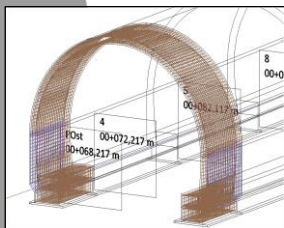
Precision machine
tool with
NC control

5x faster: Total milling time 2h05 instead of 10h30



BIM in practice (M+M Software)

- BIM / Civil Engineering: Structural Analysis & Reinforcement Software
 - Subsidiary SOFiSTiK AG (est. 1987) / M+M share 51.4%
 - Technology leader in bridge, geotech/tunnel and building construction
 - Over 3,000 customers in more than 60 countries on all continents
 - Impressing References – e.g. Sixth Street Viaduct in Los Angeles, USA (2022)
 - Various special modules rounding up the software portfolio e.g.:
 - Bridge + Infrastructure Modeler to design Bridges, Tunnels and other profile buildings like noise barriers
 - CFD (Computational Fluid Dynamics) for wind analysis
 - Seismic analysis of building safety in case of earthquakes etc.



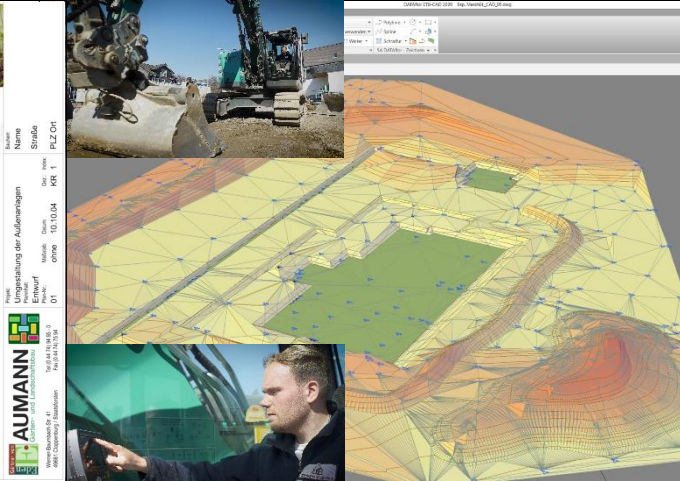


BIM in practice (M+M Software)



■ Gardening / Landscaping / Earthworks for Architects and Implementers

- M+M Subsidiary DATAflor, Goettingen, Germany (est. 1982) / M+M share 67.2%
- Integrated software solutions not only containing graphical planning but also calculation, tender, quoting, construction site controlling and billing
- Three examples from the extensive functionality:
 - Garden plan with planting suggestion and 'flowering calendar' across the seasons (left picture)
 - Digital terrain model: Comfortable 3D design / Output to excavator control units (middle picture)
 - GRUENSTUDIO 3D: Live experiencing the future garden e.g. via VR glasses (right picture)



Digitization in practice

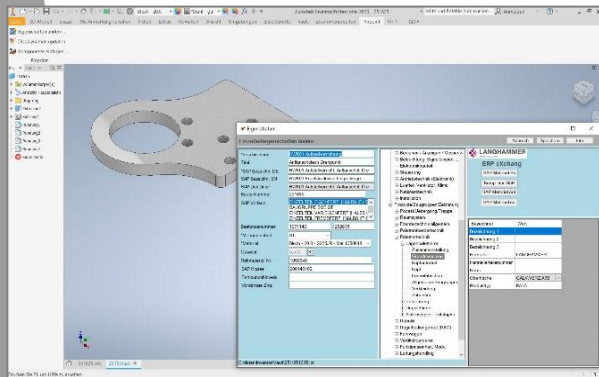


- Solutions for Manufacturing Customers with high savings potential, e.g.:

PDM/PLM: Connecting design and commercial data, e.g. SAP

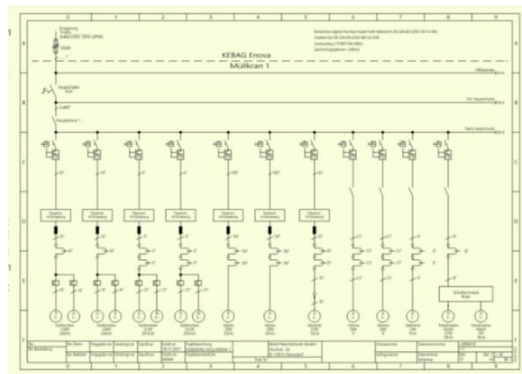
CAE for large plants: electrical, hydraulics, pneumatics as well as building services

Fully automated variant design for profitable production from batch size 1



pdm  booster

exs
THE FUTURE OF CAE



custom 



man  machine
Software

mensc  machine
Software



Digitization in practice

■ Architecture: BIM – Building Information Modelling / Management



BIM training series for all stakeholders in construction projects - from draftsman to project manager. Since 2012 more than 10,000 participants have been trained/certified.



Application/Countrification
family adapting Autodesk Revit
to local standards & needs

bim booster

Planning / Model checking
Calculation Module
2D/3D Quantity Take Off



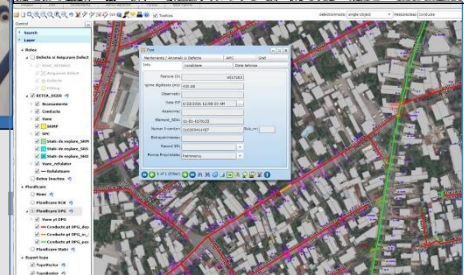
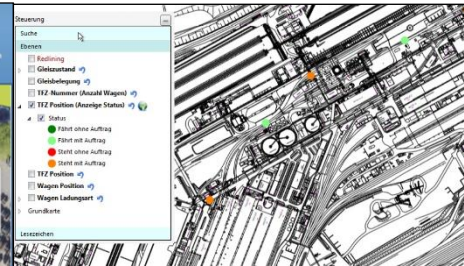
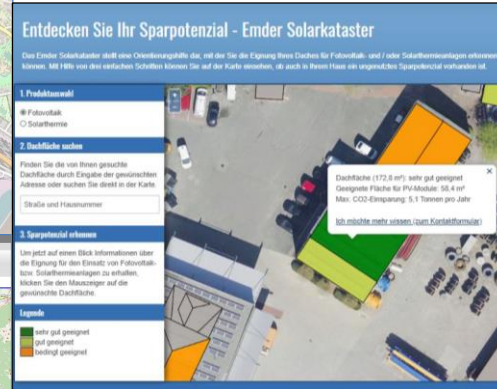
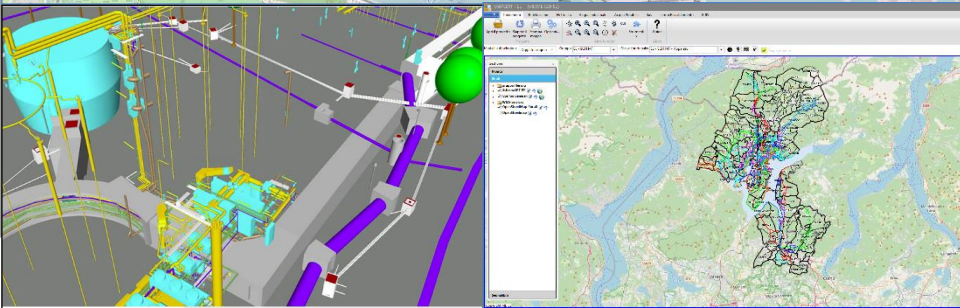


Digitization in practice



- Building Information Management / BIM for Infrastructure: MuM MapEdit as a data hub for the Digital City or Factory

Approx. 2,500 seats at nearly 200 customers in D, CH and Europe: Municipalities, Suppliers, Industry, Ports/Airports, Planning Offices...

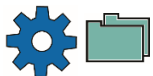


Allocation of Gross Profit (2023: EUR 168.53 mIn)

Manufacturing (~55%):



- CAM Software hyperMILL / proprietary kernel hyperCAD S
Target group: Owners/Buyers of Precision Machine Tools
- Digitization: Projects/Training for Mechanical/Electrical/Process Engineering, Hydraulics, Pneumatics, Automotive/Aerospace/Shipbuilding ...



Architecture/Construction/Engineering (~35%):



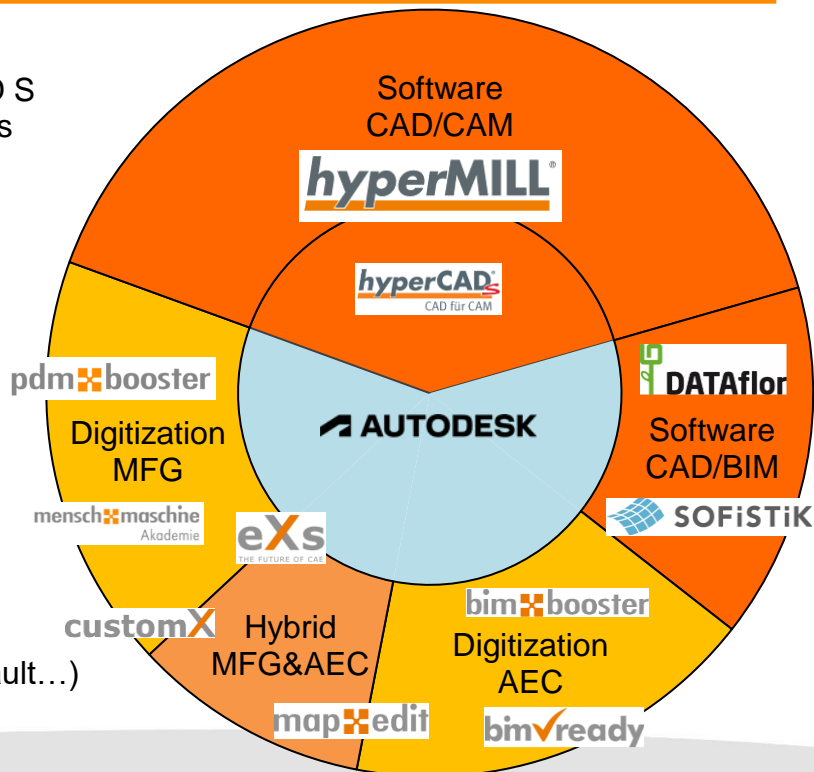
- Software: BIM/Gardening/Landscaping (DATAflor)
BIM/Structural/Civil Engin/Bridge/Tunnel (SOFiSTiK)
- Digitization: Projects/Training for Architecture, Building Services, Facility Management ...



Hybrid MFG & AEC (~10%):



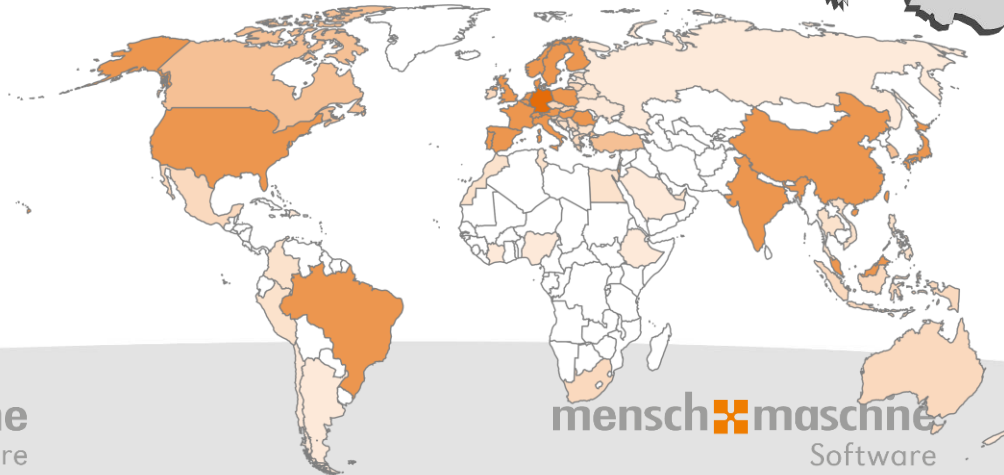
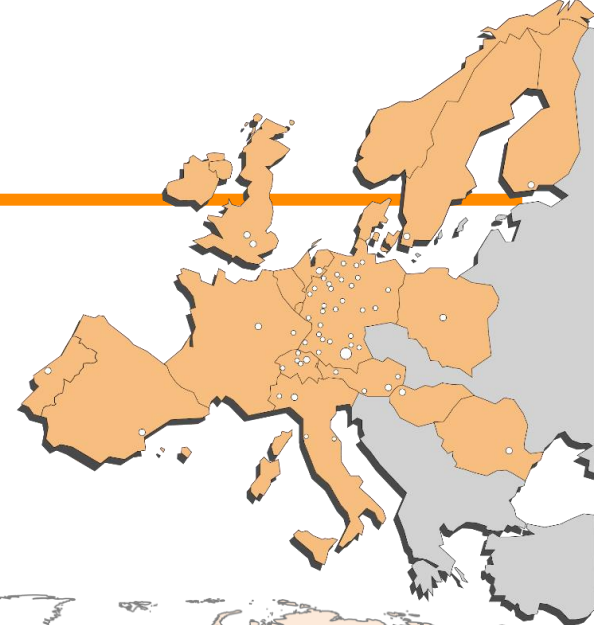
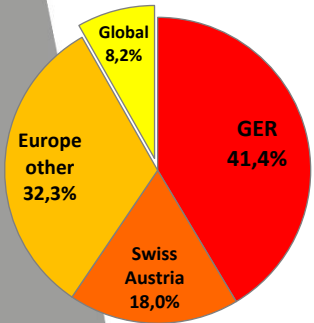
- CAE, Infrastructure (Digital City / Factory), Variant design, iBIM for AEC subcontractors ...
- Common Base (Exception CAM):
Autodesk CAD Standards (AutoCAD, Revit, Inventor, Vault...)
VAR Business: Autodesk Business / Software: OEM Licensing



Global sales / DACH focus

■ Geographical sales contribution: (2023)

- ◆ Germany: EUR 133.5 mln / 41.4%
- ◆ Austria/Switzerland: EUR 58.2 mln / 18.0%
- ◆ Europe (other): EUR 104.1 mln / 32.3%
- ◆ Global: EUR 26.5 mln / 8.2%
- ◆ M+M's own CAM and BIM / Civil Engineering Software is sold to more than 70 countries on all five Continents
- ◆ ~75 Subsidiaries in >20 Countries (Europe, Asia and America)
- ◆ Far over 100,000 active seats @ more than 30,000 customers



Sustainability: Economy & Ecology in harmony

The M+M group is using all suitable roof surfaces in corporate ownership for regenerative power production with a total amount of ~200 MWh solar power p.a.



The M+M business model is based on resource savings for customers ...

- ✓ A precision machine tool that runs two to five times faster consumes correspondingly less electricity
- ✓ The same applies when customers accelerate their technical processes with eXs, customX or PDM Booster
- ✓ Or when BIM Ready training and the use of BIM Booster enable more effective planning and resource-saving construction
- ✓ Or when large infrastructure operators can achieve their ambitious sustainability goals more quickly through MapEdit
- ✓ A structure planned and calculated with SOFiSTiK software uses less steel and concrete or can alternatively be made of a more environmentally friendly material such as wood
- ✓ With the Gardening/Landscaping design software from DATAflor, gardens or parks are created that make a direct contribution to CO² reduction

... which should be enough to more than compensate the M+M CO² footprint



M+M: Entrepreneurial & Public Company

Listings:

- ◆ scale, Frankfurt (scale30)
- ◆ m:access, Munich

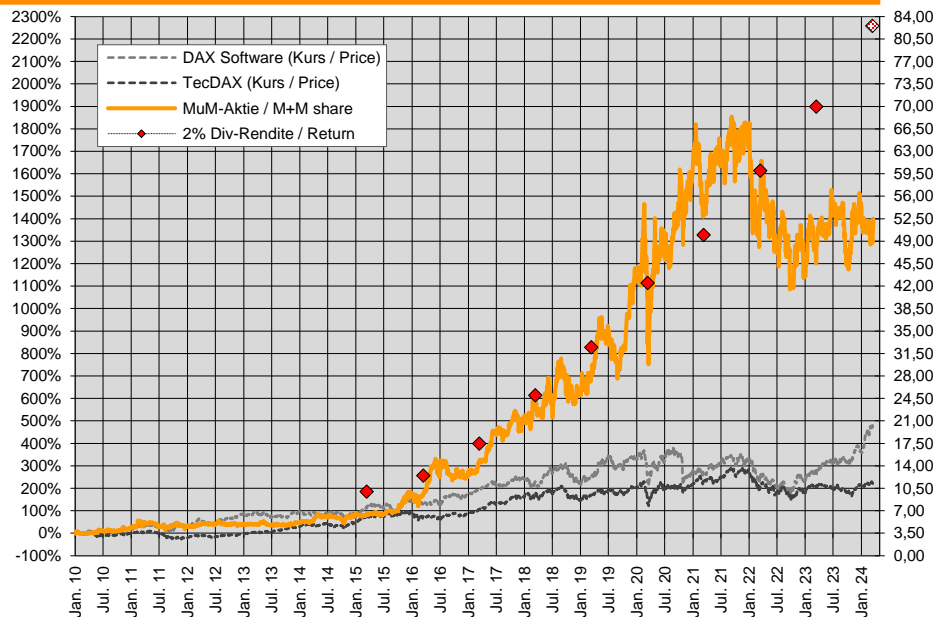
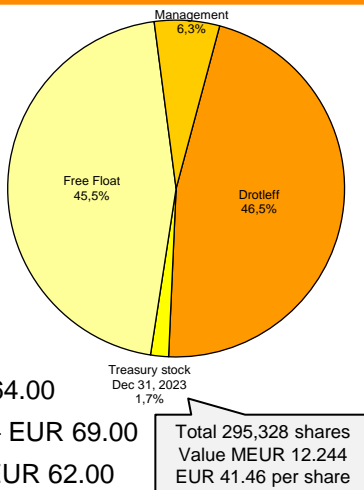
Designated Sponsors:

- ◆ LBBW, Stuttgart
- ◆ Oddo BHF, Frankfurt

Analyst Coverage:

- ◆ LBBW: „Buy“ – fair value EUR 64.00
- ◆ SMC Research*: „Strong buy“ – EUR 69.00
- ◆ Bryan, Garnier & Co*: „Buy“ – EUR 62.00
- ◆ Baader Helvea*: „Buy“ – EUR 65.00
- ◆ Berenberg*: „Buy“ – EUR 72.00

*available in English language



Total dividends paid since 2010: EUR 7.10

M+M share correlated with ~2% initial dividend return since 2016. Volatility: 2020/21 min. ~1.5% // 2022/23 max. ~3.5%

Why invest in M+M shares ?

- M+M is a leading developer of technical software solutions
 - ◆ Founded 1984 // 40 years of established market position // >1,100 employees
 - ◆ More than 30,000 active customers with far over 100,000 active seats worldwide
 - ◆ Broad geographical & sectoral allocation allows for flexible change management
 - ◆ Entrepreneurial and 27 years public company
- Highly scalable business model / sustainable profitable growth
 - ◆ Organic growth (CAGR): long-term average approx. 10% p.a.
 - ◆ EPS 2023: 172 Cents – Targeted doubling in 4-5 years: EPS >344 Cents until 2027/28
 - ◆ Profit growth target secured by effective cost management
- Continuously increasing dividend return due to high payout ratio
 - ◆ Reason: Investment in software development (EUR >24 mln p.a.) is not capitalized
 - ◆ That is why M+M can distribute the profit in full without endangering its future

More Information: www.mum.de / Investor Relations